



Welcome to GRABA

Grand Rapids Area Basketball Association

www.grandrapidsbasketball.com

Youth:	Grades 1-6
Community / School:	Grades 7 & 8
Traveling / GNWL:	Grades 5-8
High School:	Grades 9-12

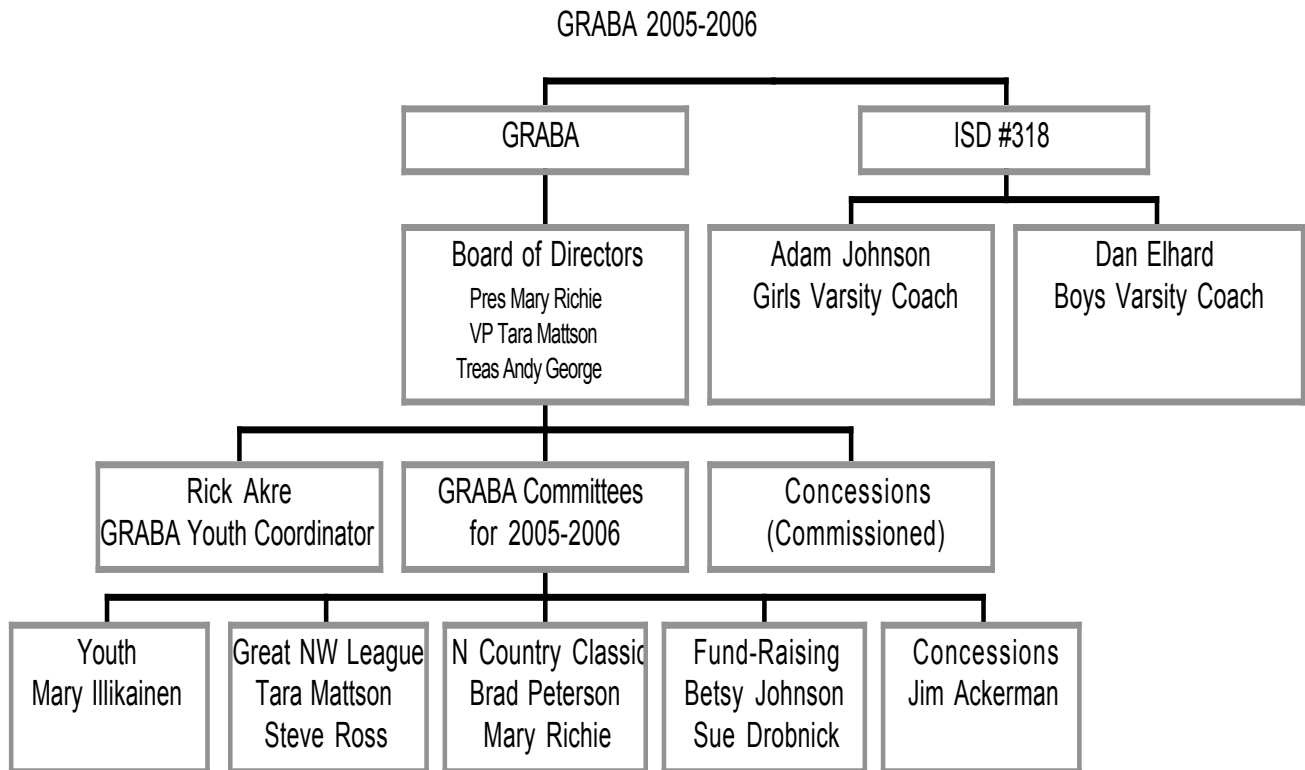
GRABA Purpose: To promote, foster and perpetuate the game of basketball at the youth level.

GRABA Philosophy: Basketball should be a fun and rewarding experience for all: players, coaches, spectators and referees.

Welcome to the Grand Rapids Area Basketball Association. Organized in 1996, GRABA serves as the booster club for the high school program, sponsors traveling teams in the Great Northwest League, provides funding support for the middle school program and administers the elementary school program. GRABA works with the Grand Rapids Recreation and Parks Department, ISD #318 activities and community education departments to provide developmental and competitive basketball for girls and boys in grades 1-12 in the Grand Rapids area.

This handbook provides an overview of the community and school basketball programs for boys and girls in the Grand Rapids Area. For more information or to volunteer, please contact a current board member or visit us at www.grandrapidsbasketball.com.

Organization



Volunteer Opportunities

Concessions & Gate

Family and friends of basketball players staff the concession stand during tournaments, high school and youth games; and sell tickets for gate admission to some tournaments. The proceeds from concession and ticket sales throughout the season contribute nearly 40 percent of GRABA's revenue.

Tournaments

GRABA hosts the annual **North Country Classic** tournament for boys and girls in grades 6-9. This year, the boys' tournament is scheduled for January 21 & 22, 2006 and the girls' tournament is scheduled for February 11 & 12, 2006. Games are held at both the middle school and high school gyms. Volunteers are needed for concessions, ticket sales, and scorekeeping.

Each year that Minnesota State High School League post-season tournaments are held at Grand Rapids, GRABA operates the concession stand with its volunteers.

Coaches

Volunteer coaches are needed for grades 1-2, 3-4 and 5-6 boys and girls teams at each of the elementary schools in District #318. Training materials and assistance, gym time, equipment and game schedule are provided by Rick Akre, GRABA's youth coordinator, assisted by the volunteer school coordinator at each site. Background checks are required for each volunteer working with youth.

Board of Directors and Committees

The volunteer **board** of directors is open to community members with an interest in developmental and competitive basketball. Officers are elected annually and members serve 3-year terms ending in August. Currently, there are 13 board members:

Past pres Jim Ackerman	Steve Ross	Rick Akre*
Pres Mary Richie	Mary Illikainen	Adam Johnson*
VP Tara Mattson	Sue Drobnick	Dan Elhard*
Treas Andy George	Betsy Johnson	*ex-officio members
Sec'y Steve Benson	Chuck Scherer	

Committees are appointed by the board to accomplish specific tasks. Board members lead each committee with membership recruited from friends, family and the community. 2005-2006 committees:

- Youth program
- Great Northwest League
- North Country Classic Tournament
- Fund-Raising and communications
- Concessions

Levels of Play & Timelines

Youth

Teams are formed at each elementary school for boys and girls in grades 1-2, 3-4 and 5-6. Over 300 kids participate in this level of basketball where the emphasis is on participation, skill development and a positive atmosphere for nurturing team play as well as individual progress.

Registration for the youth program is September 13 -23, 2005. There is a participation fee that includes a team T-shirt. Scholarships are available.

Practice begins the week of October 10; boys on M & Th, girls on T & F. Practice schedules are handed out at registration.

Games are held on Saturdays beginning October 29 at the Robert J. Elkington Middle School or in the Greenway middle and high school gyms. Players receive game schedules from their coaches during the first 2 weeks of practice.

Traveling Teams

GRABA sponsors traveling teams for boys and girls in grades 5-8 at increasingly competitive levels of play. Currently, our teams participate in some of the Great Northwest League (GNWL) tournaments throughout northwest Wisconsin and northeast Minnesota. The GNWL tournaments are 1-day only and are held within driving distance of Grand Rapids – reducing the cost of participation for coaches, parents and players. GRABA board volunteers manage the registration and scheduling of our participation in GNWL each summer. Other tournaments are arranged with leagues in our area (such as Bemidji) and with Minnesota Youth Athletic Services (MYAS) – the Twin Cities-based home of AAU basketball in Minnesota.

Traveling team coaches are recruited from the community (many are parents of players) who receive a small stipend from GRABA for their time and travel.

Players in grade 5 will participate in the regular season youth program with the coach's option of practicing once per week as a separate traveling team. Traveling team tournament play will begin in February after the regular youth season ends.

Tryouts for the traveling teams, led by the boys' and girls' high school varsity coaches, are held in mid-October. All players in grades 5-8 are eligible to tryout; dates and times will be announced through the schools. One team per grade level is sponsored by GRABA.

Players selected for these teams are responsible for the following:

Grades 5 & 6 – register and pay the fees to participate in the youth program; traveling team fee and uniform rental are additional. Families provide transportation for their player. Fifth graders begin their traveling

season after the regular season (February 11), 6th graders begin their game season in November; season ends in March for both grade levels. Players receive game and practice schedules from their coach at practice.

Grades 7 & 8 – submit complete MSHSL forms and fees with the activities department through the middle school office; traveling team fee and uniform rental are additional. Families provide transportation for their player. Play begins in November and ends in March; players receive game schedules from their coach at practice.

Middle School Teams

ISD #318 sponsors girls and boys teams in 7th & 8th grade separate from the traveling teams. Practice, coaches, uniforms, game schedules and travel arrangements are coordinated by the Grand Rapids High School Activities office.

Players submit complete MSHSL forms and fees with the activities department through the middle school office. Play begins in November and ends in February.

High School Teams

ISD #318 sponsors girls and boys teams in 9-12th grade who compete at the 9th grade, junior varsity and varsity levels throughout the state. The high school basketball program is administered by the Grand Rapids High School Activities Director, Wayne Pender. GRABA serves as a booster club, raising funds to augment the school's basketball budget. (Fund-raising includes product sales, fees and concession sales.) Girls head coach Adam Johnson, and boys head coach Dan Elhard participate in GRABA and provide technical direction for the developmental programs.

Annual Calendar

- September: Youth program registration
- October: Traveling team tryouts; youth practice and game schedule begins
- November: Middle School and High School team practice begins; traveling team game schedule begins
- December: Regular season games and tournaments
- January: Regular season games and tournaments
- February: Regular season games and tournaments; youth program ends
- March: Regular season ends; post-season tournament play

Budget & Fund-Raising

GRABA operates on an annual budget of about \$100,000 in the following general categories (actual income and expense will vary from these budget estimates):

Category	Revenue	Expense	Difference
Program Youth Traveling Teams High School			
Program sub-total	\$46,505	\$46,150	\$355
Non-Program Concessions & gate Tournaments Fund-raising			
Non-Program sub-total	\$55,450	\$33,145	\$22,305
General & Administrative Capital Purchases			
Administrative sub-total	\$0	\$17,023	-\$17,023
Totals	\$101,955	\$96,318	\$5,637

For more specific information about GRABA and its budget, contact any of the current board members.